

PRODUCT OVERVIEW

GORI 05 EXPRESS

Decking Oil



- ▶ For exterior wooden decking and stairs
- ▶ Quick dry - suitable for use 1 hour after application
- ▶ Helps prevent cracks, drying and decay

GORI 11

Wood Preservative



- ▶ Protection for outdoor softwood against blue stain, mould, fungi, insects and termites
- ▶ Compatible with all wood finishes
- ▶ Penetrates deep into the wood

Not available for sale in Republic of Ireland

GORI 44+ QUICK DRY

Translucent Wood Stain



- ▶ For cladding, fences and exterior structures
- ▶ Protects against UV-rays, fungi and mould - prevents flaking, peeling and cracking
- ▶ Quick dry, semi-transparent wood protection, which enhances the natural grain of the wood

UP TO 4 YEARS LIFE

GORI 99 EXTREME

Opaque Wood Finish



- ▶ For windows, doors and cladding
- ▶ With Slow Release technology for longer protection
- ▶ Quick dry, robust and durable weather resisting protection for new and old wood

UP TO 15 YEARS LIFE

GORI 88 COMPACT

Translucent Wood Stain



- ▶ For windows, doors and cladding
- ▶ With Slow Release technology for longer protection
- ▶ Durable, semi-transparent, non-drip. Protects against UV-rays, fungi and mould

UP TO 8 YEARS LIFE

GORI 88 COMPACT

Opaque Wood Finish



- ▶ For cladding, fences and other exterior structures
- ▶ With Slow Release technology for longer protection
- ▶ Robust, non-drip, durable, water repellent and weather resisting. For new and old wood

UP TO 8 YEARS LIFE

MAIN ADVANTAGES OF GORI WOOD PROTECTION

UV Protection

Prevention against greying caused by UV-rays.

Microporosity

Wood releases its excess moisture content without cracking the stain coating; the wood can "breathe".

Fungicide – insecticide

Prevention against surface fungi and insect attacks.

Water repellent

Prevention against wood swelling when exposed to humidity, rain and water.

Easy maintenance

Coating degrades through erosion, without accumulating coats. No need to sand or strip.

Natural beauty

Translucent pigments enhance the wood's natural beauty.

For more information
call 01924 354 354

GORI
Colour Card



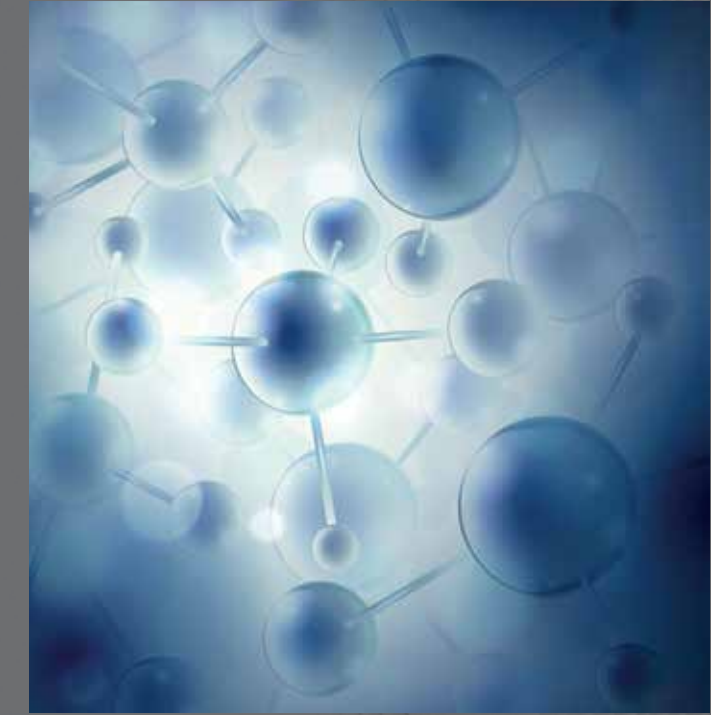
INTRODUCING
GORI PROFESSIONAL



Far from being just another element in a construction project, wood stands out for its strength and warm quality, regardless of the application. From minimal decorative carvings to state-of-the-art structures made of wood, its benefits are a distinguishing feature, when compared to any other material. Easy to handle, strong and light, wood is often described as a fine material. In order to preserve those qualities, despite the passing of time, care and protection is required.

GORI, an expert in wood care, offers a range including preservatives, wood protection, maintenance and decorative products which all preserve wood with its original beauty and natural qualities. GORI wood protection has been produced in Scandinavia for more than 100 years, and we are proud to call ourselves "The Scandinavian Woodcare Experts".

A good wood protection product is durable, the colour lasts and the product offers protection against rot, fungi, UV-rays and water. Needless to say – the GORI range meets the requirements to obtain a beautiful and long lasting end result.



INTELLIGENT WOOD
PROTECTION FROM GORI

Slow Release Protection keeps wood healthy for a significantly longer period of time by providing the optimum protection against mould and fungi. The innovative technology ensures that the active agents, which protect the surface film, are only released when necessary. When the climate is dry, the active agent will remain dormant in the product. Therefore, the Slow Release technology gives intelligent protection to the film – when the weather demands it.



OPAQUE WOOD FINISH

TRANSLUCENT WOOD STAIN

Although every effort is made to ensure accurate colour representation, due to the limitations of the printing process, the colours in this brochure may not be true representations of the actual colours and are meant as a guide only. The final colour of wood stain will vary depending on the surface of the wood it is being applied to. We recommend the product be tested in a small area prior to starting the full project.

